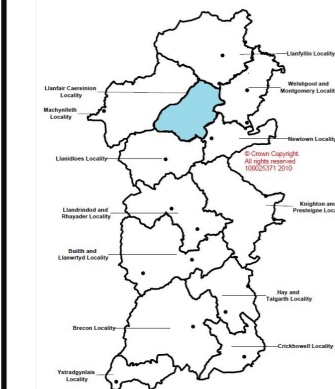


# Review of Older People day time activities, Business Intelligence Insight: Llanfair Caereinion

## The Community



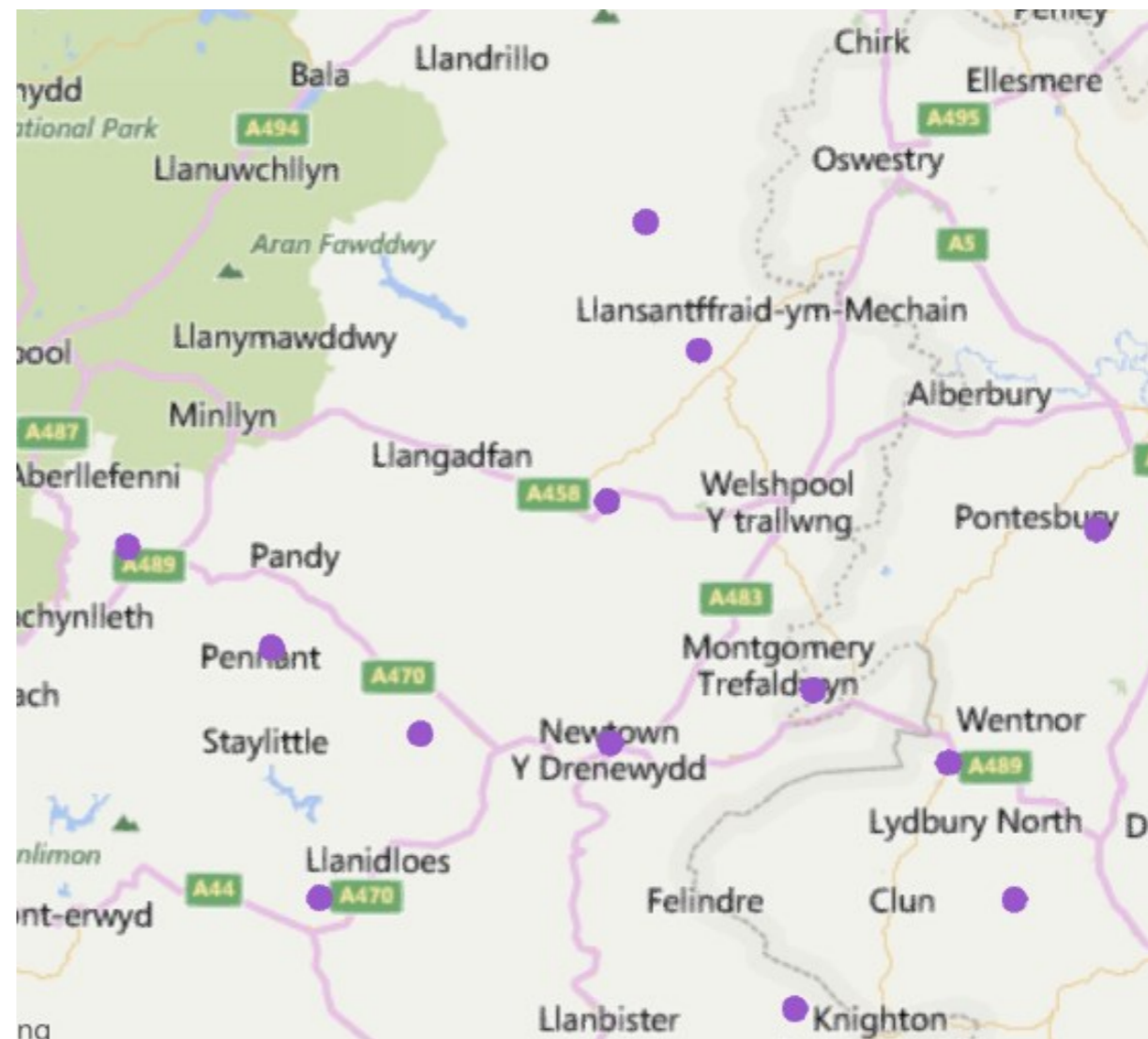
- The current population is 6,203<sup>1</sup>. The average age of people in the locality is 45 years (Powys average 45). The population is made up of 50% Females and 50% Males.
- 23.8% of the population are over 65 (Powys average is 25.3%), whilst people over 85 make up 2.4% of the population (Powys average is 3.4%). Overall the population is expected to decrease by 0.5% by 2036 (from 6,187 in 2013 to 6,159; Powys average is 1.4% increase)<sup>2</sup>. In contrast, the over 85 population is expected to rise more steeply, with the population moving by 165% from 141 to 374 over the same period.

9.4%

- Based on Dementia prevalence trends for Powys<sup>3</sup> and population distributions, it is estimated that there are around 112 people with dementia in this locality and that this will rise to 130 and then 206 by 2020 and 2035 respectively
- 9.6% (314 people) of working population employed in Care/Leisure industry—lower than Powys average 10.1% (500 per locality)<sup>4</sup>
- Higher than average travel time to an NHS Dentist (87 minutes, Powys Average 55 minutes) and GP surgery (77 minutes, Powys Average 50 minutes)<sup>5</sup>
- 17% of residents in this locality feel satisfied with care for older people/the elderly (average for all Powys Localities = 28%)<sup>6</sup>
- 75% of residents feel satisfied that this locality is a place where people look out for and support each other (average for all Powys Localities = 81%)<sup>6</sup>
- 92% of residents in this locality say that they or a family member participate (either regularly or sometimes) in local community events and activities (average for all Powys Localities = 84%)<sup>6</sup>



There is currently no Day Centre Provision in this Locality

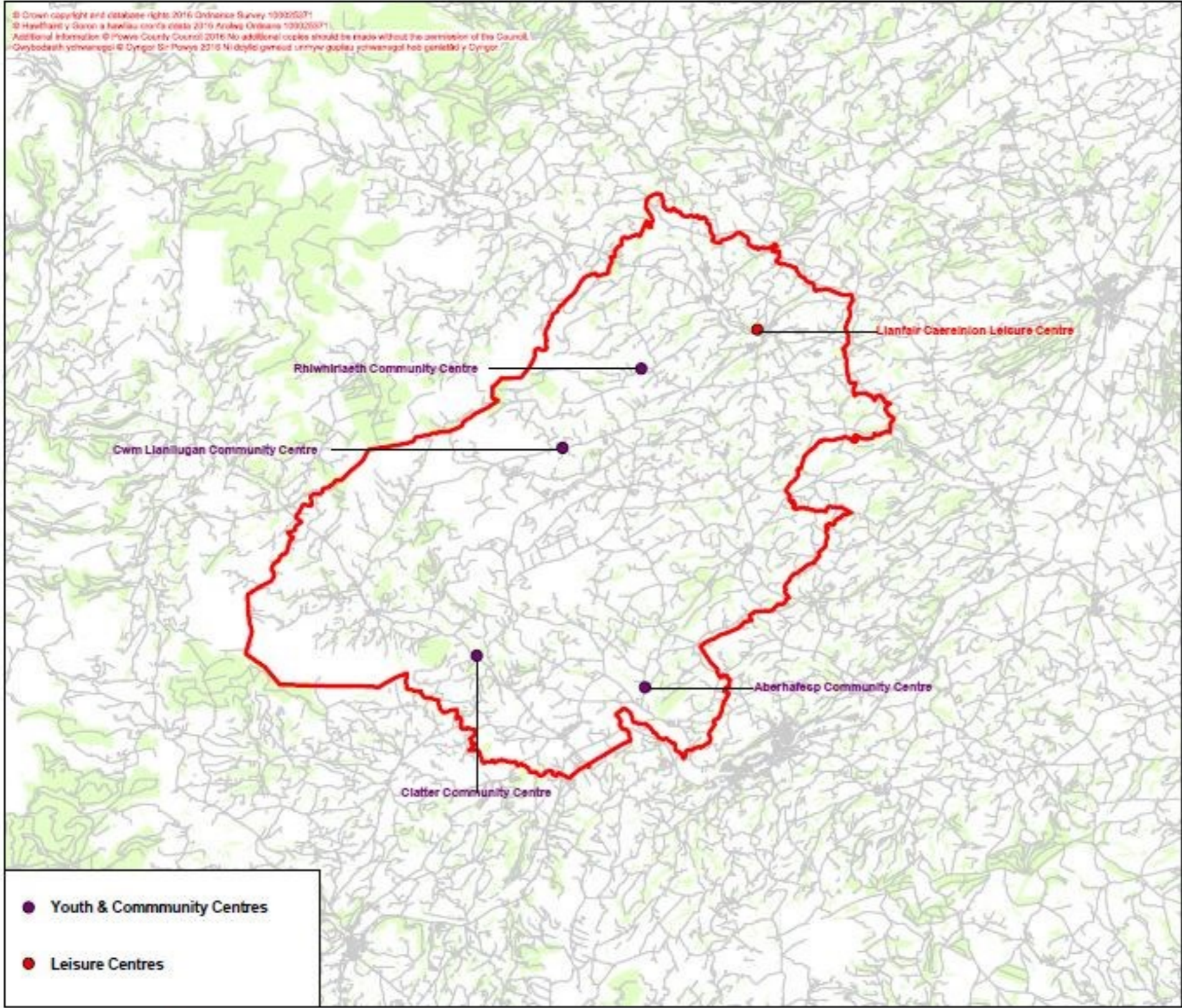


Map of Preventative Services for Adults and Older People

### References

- |   |   |
|---|---|
| 1. 2014 Mid Year Population Estimates, ONS  | 5. Welsh Index of Multiple Deprivation, 2011. PCC Research & information Unit Report RWIMD11/0212 |
| 2. 2011 based population projections for Local Authorities in Wales, Welsh Government, 2013 | 6 Powys County Council Residents Satisfaction Survey, 2015  |
| 3. www.daffodilcymru.org.uk   |   |
| 4. Annual Survey of Hours and Earnings (ASHE), ONS, 2011                                    |   |

© Crown copyright and database rights 2016 Ordnance Survey 100020371  
 © Hafdrain y Gorn a hysbys cerbydau 2016 Arlyso Ordnance 100020371  
 Additional Information © Powys County Council 2016 No additional copies should be made without the permission of the Council.  
 Gwybodaeth ychwanegol © Cyngor Sir Powys 2016 Ni ddylid genned unrhyw gopïau ychwanegol heb ganiellid y Cyngor.



- Youth & Community Centres
- Leisure Centres